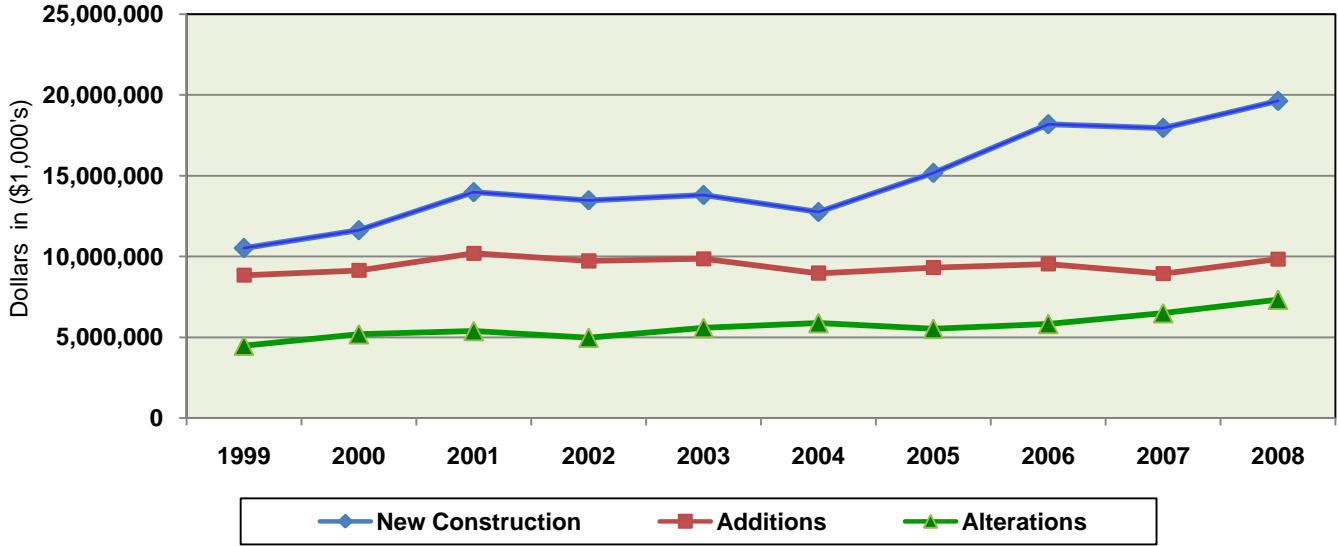


U.S. K-12 SCHOOL CONSTRUCTION DATA 1999-2008

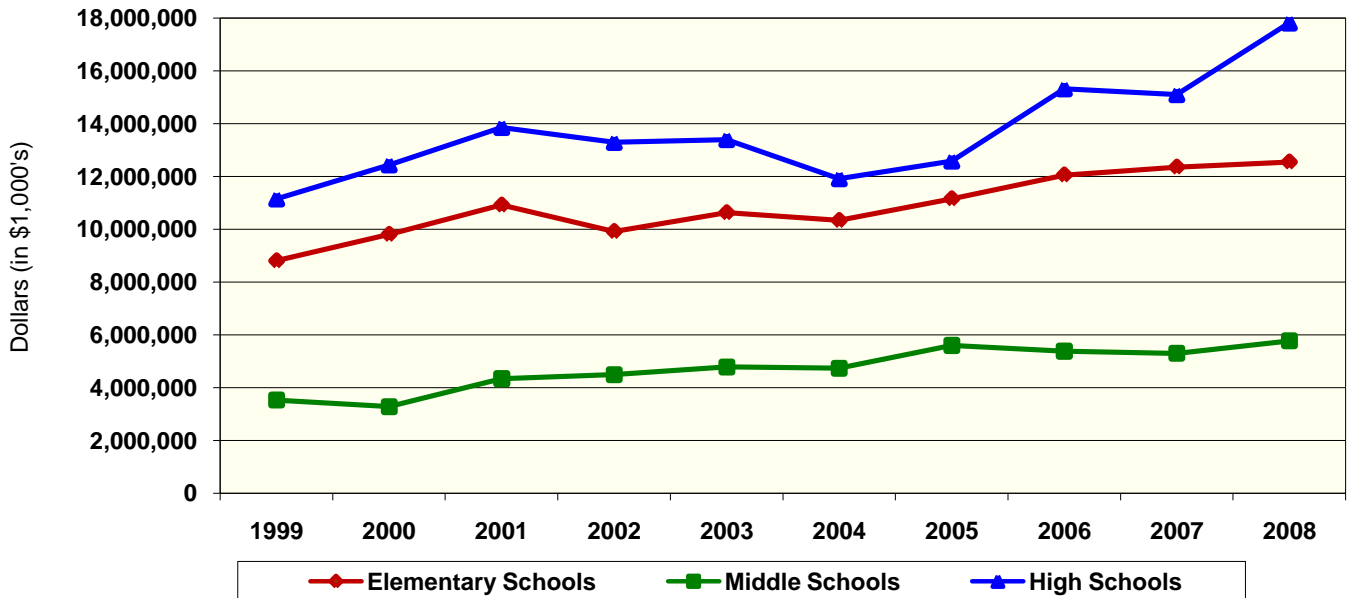
National Clearinghouse for Educational Facilities

Total Dollars Spent on K-12 School Construction



Total 1999-2008: \$298,155,547,000

Total School Construction Expenditures by Building Type, Including New Construction, Additions, and Alterations



This nationwide school construction cost data covers aggregate contract costs for public and private K-12 school construction, additions, and alterations and include the costs of all fixed furnishings and equipment. The data do not include site acquisition and remediation costs, or the costs of moveable furniture and equipment, personal computers, or other items not purchased as part of a construction contract, nor do they include school planning, architectural, engineering, and construction management fees.

SOURCE: McGraw-Hill Construction Data, 1999-2008

National Clearinghouse for Educational Facilities

at the National Institute of Building Sciences

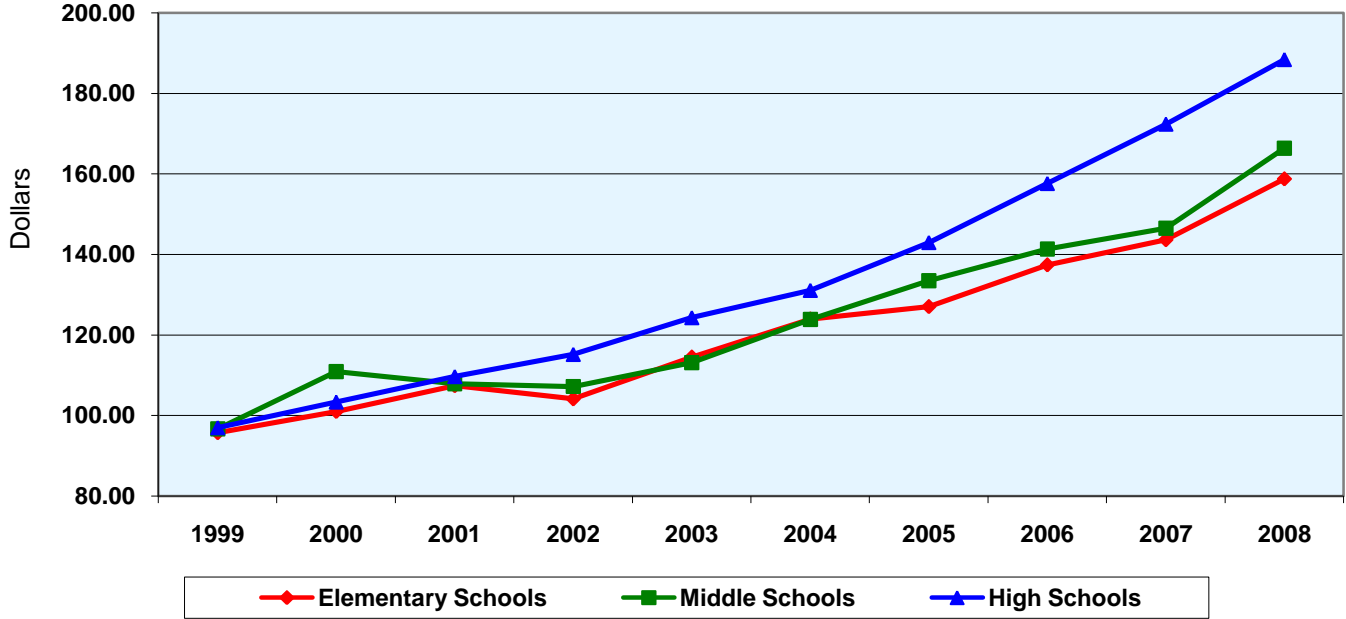
1090 Vermont Avenue, NW, Suite 700, Washington, DC 20005-4905 888-552-0624 www.ncef.org

Funded by the U.S. Department of Education

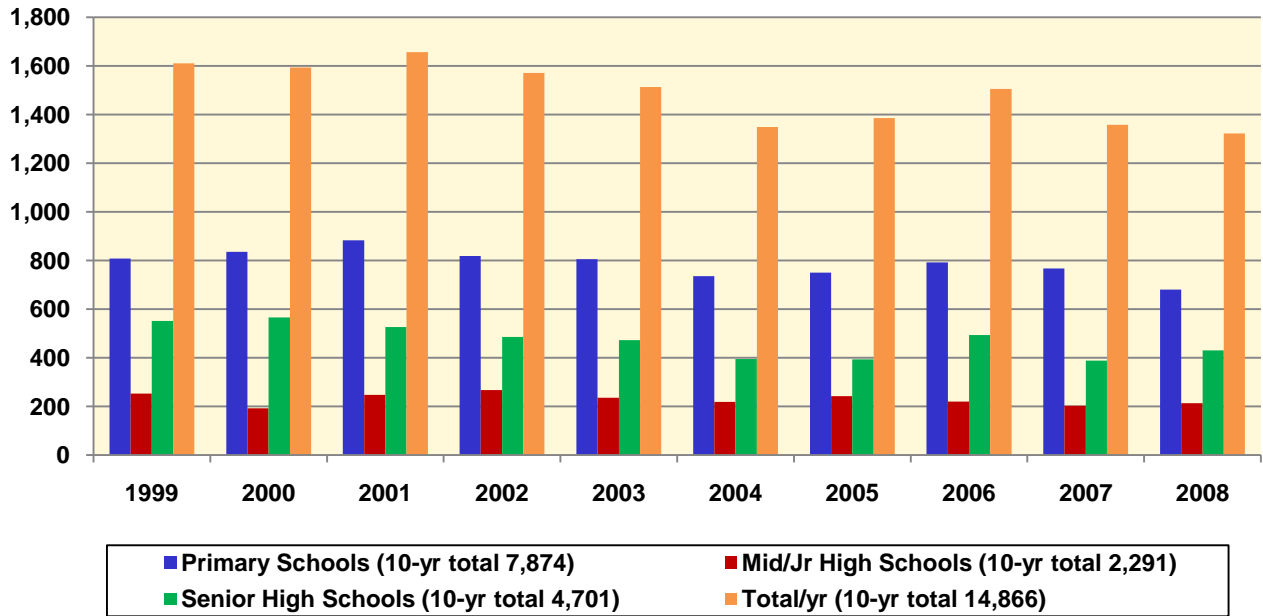
U.S. K-12 SCHOOL CONSTRUCTION DATA 1999-2008

National Clearinghouse for Educational Facilities

New School Construction Costs Per Square Foot



New Schools Built, by School Type



SOURCE: McGraw-Hill Construction Data, 1999-2008

National Clearinghouse for Educational Facilities

at the National Institute of Building Sciences

1090 Vermont Avenue, NW, Suite 700, Washington, DC 20005-4905 888-552-0624 www.ncef.org

Funded by the U.S. Department of Education